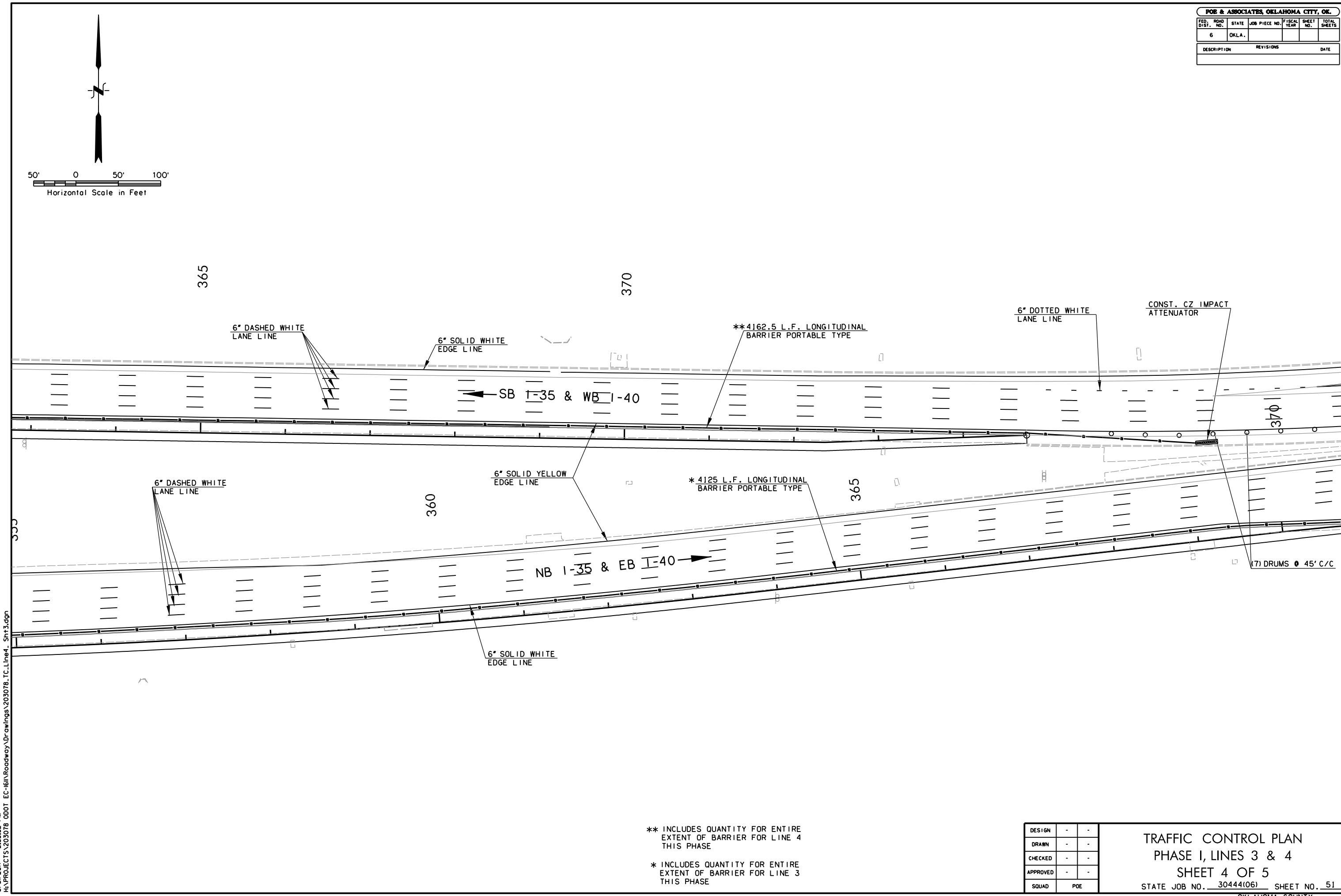
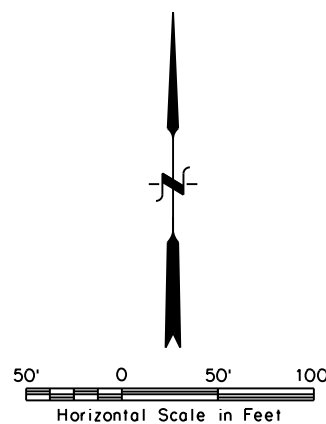


| POE & ASSOCIATES, OKLAHOMA CITY, OK. | | | | | |
|--------------------------------------|-------|---------------|-------------|-----------|--------------|
| FED. ROAD DIST. NO. | STATE | JOB PIECE NO. | FISCAL YEAR | SHEET NO. | TOTAL SHEETS |
| 6 | OKLA. | | | | |
| DESCRIPTION | | REVISIONS | DATE | | |
| | | | | | |



8/31/2017 2:33:52 PM H:\PROJECTS\203078_0001_EC-1611\Roadway\Drawings\203078_TC_Line4_Sht3.dgn

** INCLUDES QUANTITY FOR ENTIRE EXTENT OF BARRIER FOR LINE 4 THIS PHASE
 * INCLUDES QUANTITY FOR ENTIRE EXTENT OF BARRIER FOR LINE 3 THIS PHASE

| | | |
|----------|-----|---|
| DESIGN | - | - |
| DRAWN | - | - |
| CHECKED | - | - |
| APPROVED | - | - |
| SQUAD | POE | |

TRAFFIC CONTROL PLAN
PHASE I, LINES 3 & 4
SHEET 4 OF 5
 STATE JOB NO. 30444(06) SHEET NO. 51
 OKLAHOMA COUNTY